

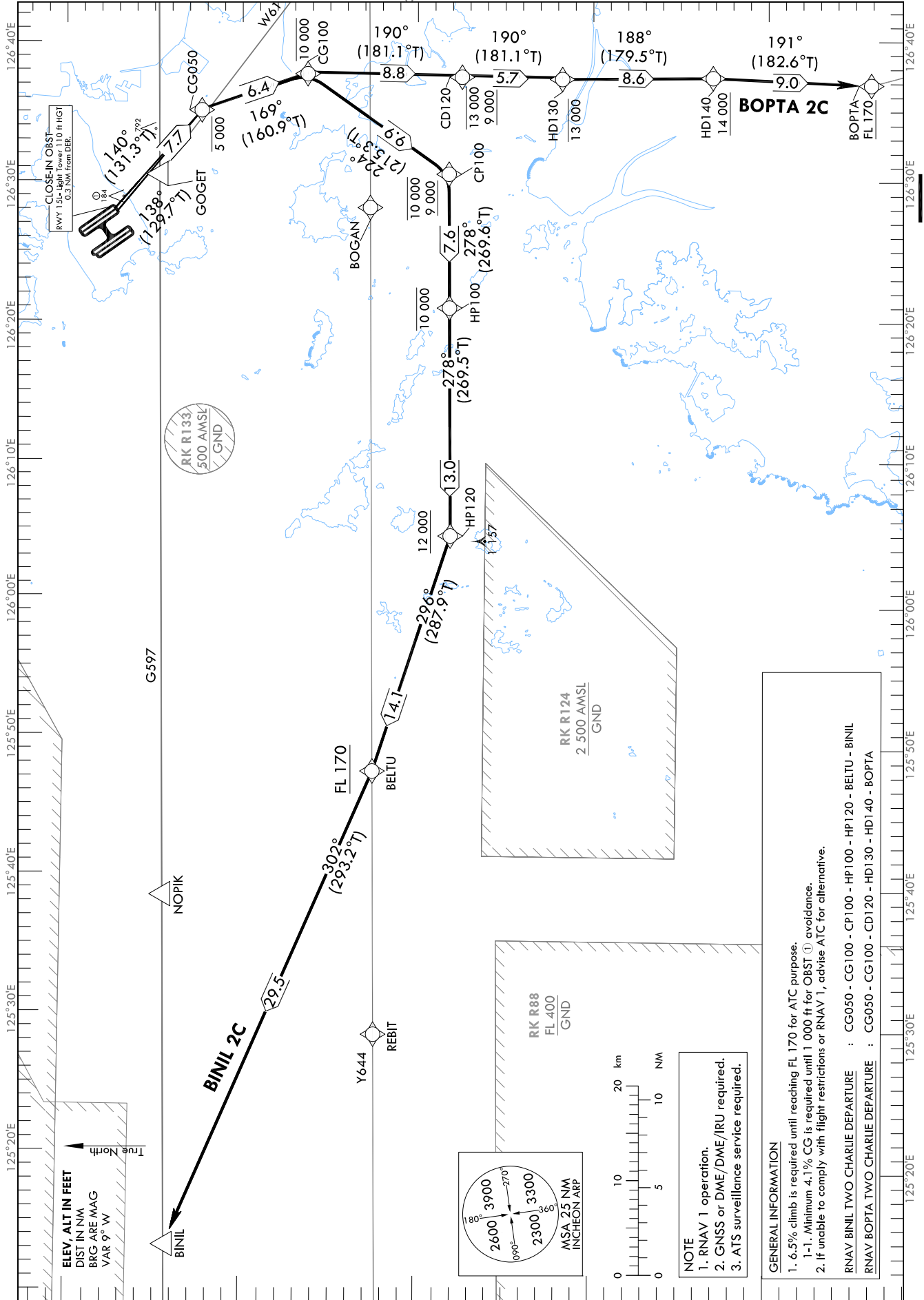
STANDARD DEPARTURE CHART
INSTRUMENT (SID) - ICAO

TRANSITION ALT 14 000
TRANSITION LVL FL 140

| | | | |
|---------|-----|--------|-------|
| SEOUL | DEP | 125.15 | 121.4 |
| | | 124.8 | |
| INCHEON | TWR | 118.2 | 118.8 |
| DAEGU | ACC | 132.8 | |

SEOUL/Incheon Intl(RKSI)
RWY 15L/R
RNAV BINIL 2C
RNAV BOPTA 2C

Note : Departure under ICAO Flight Procedures.



Change : Establishment of ALT restriction for CP100.

SEOUL/Incheon Intl(RKSI)
RWY 15L/R
RNAV BINIL 2C, RNAV BOPTA 2C

AERONAUTICAL DATA TABULATION

Standard Instrument Departure Procedure Coding Tables

| Serial Number | Path Descriptor | Waypoint Identifier | Fly-over | Course/Track °M(°T) | Distance (NM) | Turn direction | Altitude (ft) | Speed (kt) | Coordinates | VPA/RDH | Navigation specification | Remarks |
|---------------|-----------------|---------------------|----------|----------------------------------|---------------|----------------|-------------------|------------|----------------------------|---------|--------------------------|---------|
| 001 | CF | CG050 | - | 15L-140(131.3) 15R-138(129.7) | 7.7 | R | -5 000 | - | 37°22'18.4"N 126°35'07.0"E | - | RNAV 1 | - |
| 002 | TF | CG100 | - | 169 (160.9) | 6.4 | - | -10 000 | - | 37°16'16.3"N 126°37'43.8"E | - | RNAV 1 | - |
| 003 | TF | CP100 | - | 224 (215.3) | 9.9 | - | -10 000 +9 000 | - | 37°08'11.8"N 126°30'35.8"E | - | RNAV 1 | - |
| 004 | TF | HP100 | - | 278 (269.6) | 7.6 | - | -10 000 | - | 37°08'07.8"N 126°21'03.5"E | - | RNAV 1 | - |
| 005 | TF | HP120 | - | 278 (269.5) | 13.0 | - | +12 000 | - | 37°07'59.2"N 126°04'48.1"E | - | RNAV 1 | - |
| 006 | TF | BELTU | - | 296 (287.9) | 14.1 | - | +FL 170 | - | 37°12'18.0"N 125°47'59.0"E | - | RNAV 1 | - |
| 007 | TF | BINIL | - | 302 (293.2) | 29.5 | - | - | - | 37°23'49.2"N 125°13'59.3"E | - | RNAV 1 | - |

| Serial Number | Path Descriptor | Waypoint Identifier | Fly-over | Course/Track °M(°T) | Distance (NM) | Turn direction | Altitude (ft) | Speed (kt) | Coordinates | VPA/RDH | Navigation specification | Remarks |
|---------------|-----------------|---------------------|----------|----------------------------------|---------------|----------------|-------------------|------------|----------------------------|---------|--------------------------|---------|
| 001 | CF | CG050 | - | 15L-140(131.3) 15R-138(129.7) | 7.7 | R | -5 000 | - | 37°22'18.4"N 126°35'07.0"E | - | RNAV 1 | - |
| 002 | TF | CG100 | - | 169 (160.9) | 6.4 | - | -10 000 | - | 37°16'16.3"N 126°37'43.8"E | - | RNAV 1 | - |
| 003 | TF | CD120 | - | 190 (181.1) | 8.8 | - | -13 000 +9 000 | - | 37°07'27.8"N 126°37'31.2"E | - | RNAV 1 | - |
| 004 | TF | HD130 | - | 190 (181.1) | 5.7 | - | -13 000 | - | 37°01'44.4"N 126°37'23.0"E | - | RNAV 1 | - |
| 005 | TF | HD140 | - | 188 (179.5) | 8.6 | - | +14 000 | - | 36°53'08.6"N 126°37'29.0"E | - | RNAV 1 | - |
| 006 | TF | BOPTA | - | 191 (182.6) | 9.0 | - | +FL 170 | - | 36°44'06.4"N 126°36'58.4"E | - | RNAV 1 | - |

Change : Establishment of ALT restriction for CP100.

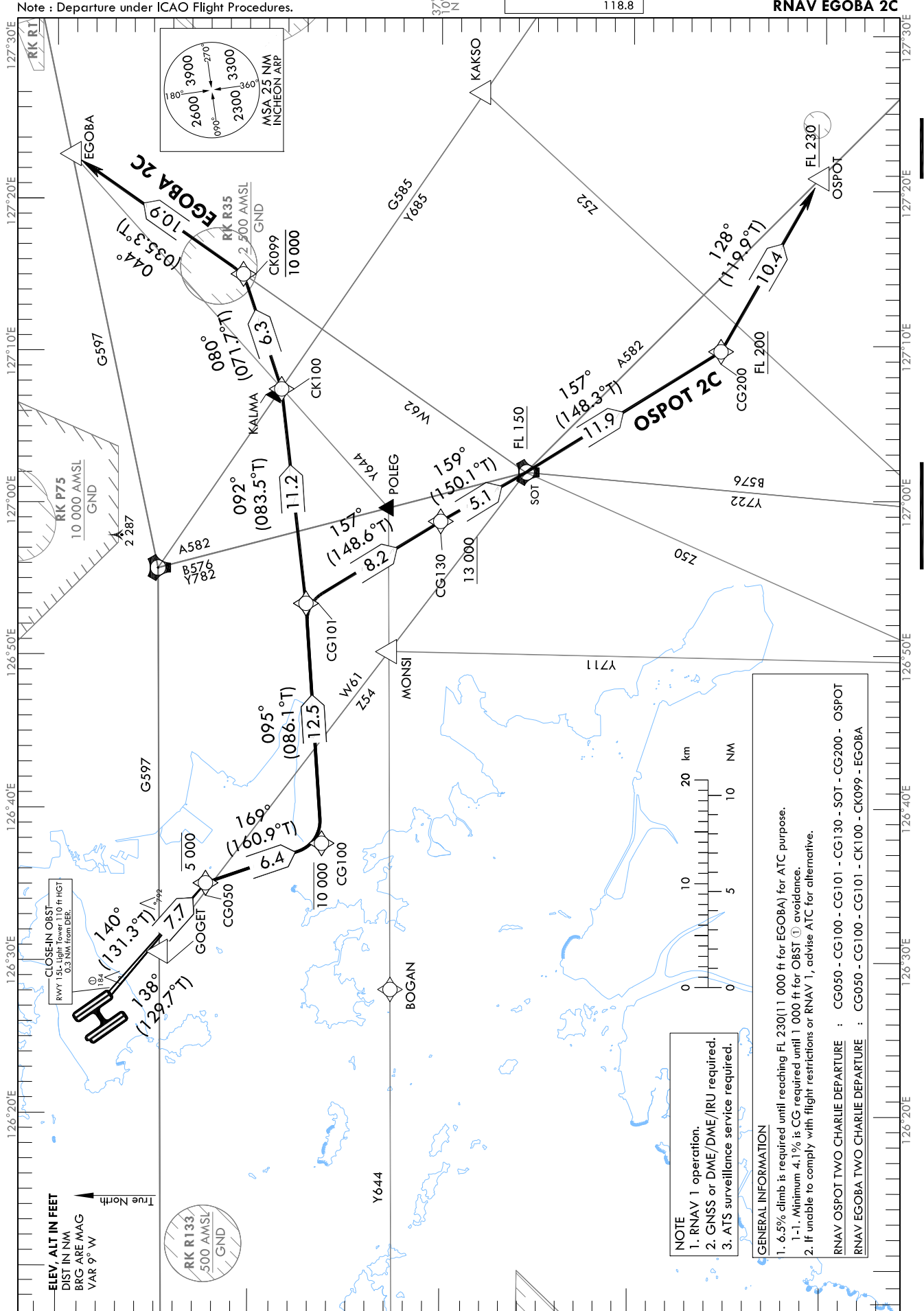
STANDARD DEPARTURE CHART
INSTRUMENT (SID) - ICAO

TRANSITION ALT 14 000
TRANSITION LVL FL 140

| | |
|-------------|--------|
| SEOUL DEP | 125.15 |
| | 121.4 |
| | 124.8 |
| INCHEON TWR | 118.2 |
| | 118.8 |

SEOUL/Incheon Intl(RKSI)
RWY 15L/R
RNAV OSPOT 2C
RNAV EGOBA 2C

Note : Departure under ICAO Flight Procedures.



Change : Information of RK P73 and Withdrawal of ALT restriction for EGOBA.

NOTE
1. RNAV 1 operation.
2. GNSS or DME/DME/IRU required.
3. ATS surveillance service required.

GENERAL INFORMATION

- 6.5% climb is required until reaching FL 230(11 000 ft for EGOBA) for ATC purpose.
- 1-1. Minimum 4.1% is CG required until 1 000 ft for OBST avoidance.
- If unable to comply with flight restrictions or RNAV 1, advise ATC for alternative.

RNAV OSPOT TWO CHARLIE DEPARTURE : CG050 - CG100 - CG101 - CG130 - SOT - CG200 - OSPOT
RNAV EGOBA TWO CHARLIE DEPARTURE : CG050 - CG100 - CG101 - CK100 - CK099 - EGOBA

SEOUL/Incheon Intl(RKSI)
RWY 15L/R
RNAV OSPOT 2C, RNAV EGOBA 2C

AERONAUTICAL DATA TABULATION

Standard Instrument Departure Procedure Coding Tables

| Serial Number | Path Descriptor | Waypoint Identifier | Fly-over | Course/Track °M(°T) | Distance (NM) | Turn direction | Altitude (ft) | Speed (kt) | Coordinates | VPA/RDH | Navigation specification | Remarks |
|---------------|-----------------|---------------------|----------|----------------------------------|---------------|----------------|---------------|------------|----------------------------|---------|--------------------------|---------|
| 001 | CF | CG050 | - | 15L-140(131.3) 15R-138(129.7) | 7.7 | R | -5 000 | - | 37°22'18.4"N 126°35'07.0"E | - | RNAV 1 | - |
| 002 | TF | CG100 | - | 169 (160.9) | 6.4 | - | -10 000 | - | 37°16'16.3"N 126°37'43.8"E | - | RNAV 1 | - |
| 003 | TF | CG101 | - | 095 (086.1) | 12.5 | - | - | - | 37°17'06.9"N 126°53'22.3"E | - | RNAV 1 | - |
| 004 | TF | CG130 | - | 157 (148.6) | 8.2 | - | +13 000 | - | 37°10'05.7"N 126°58'43.0"E | - | RNAV 1 | - |
| 005 | TF | SOT | - | 159 (150.1) | 5.1 | - | +FL 150 | - | 37°05'39.7"N 127°01'54.0"E | - | RNAV 1 | - |
| 006 | TF | CG200 | - | 157 (148.3) | 11.9 | - | +FL 200 | - | 36°55'29.2"N 127°09'43.6"E | - | RNAV 1 | - |
| 007 | TF | OSPOT | - | 128 (119.9) | 10.4 | - | +FL 230 | - | 36°50'18.1"N 127°20'54.9"E | - | RNAV 1 | - |

| Serial Number | Path Descriptor | Waypoint Identifier | Fly-over | Course/Track °M(°T) | Distance (NM) | Turn direction | Altitude (ft) | Speed (kt) | Coordinates | VPA/RDH | Navigation specification | Remarks |
|---------------|-----------------|---------------------|----------|----------------------------------|---------------|----------------|---------------|------------|----------------------------|---------|--------------------------|---------|
| 001 | CF | CG050 | - | 15L-140(131.3) 15R-138(129.7) | 7.7 | R | -5 000 | - | 37°22'18.4"N 126°35'07.0"E | - | RNAV 1 | - |
| 002 | TF | CG100 | - | 169 (160.9) | 6.4 | - | -10 000 | - | 37°16'16.3"N 126°37'43.8"E | - | RNAV 1 | - |
| 003 | TF | CG101 | - | 095 (086.1) | 12.5 | - | - | - | 37°17'06.9"N 126°53'22.3"E | - | RNAV 1 | - |
| 004 | TF | CK100 | - | 092 (083.5) | 11.2 | - | - | - | 37°18'22.7"N 127°07'21.4"E | - | RNAV 1 | - |
| 005 | TF | CK099 | - | 080 (071.7) | 6.3 | - | -10 000 | - | 37°20'21.2"N 127°14'52.0"E | - | RNAV 1 | - |
| 006 | TF | EGOBA | - | 044 (035.3) | 10.9 | - | - | - | 37°29'14.7"N 127°22'45.9"E | - | RNAV 1 | - |

Change : Withdrawal of ALT restriction for EGOBA.

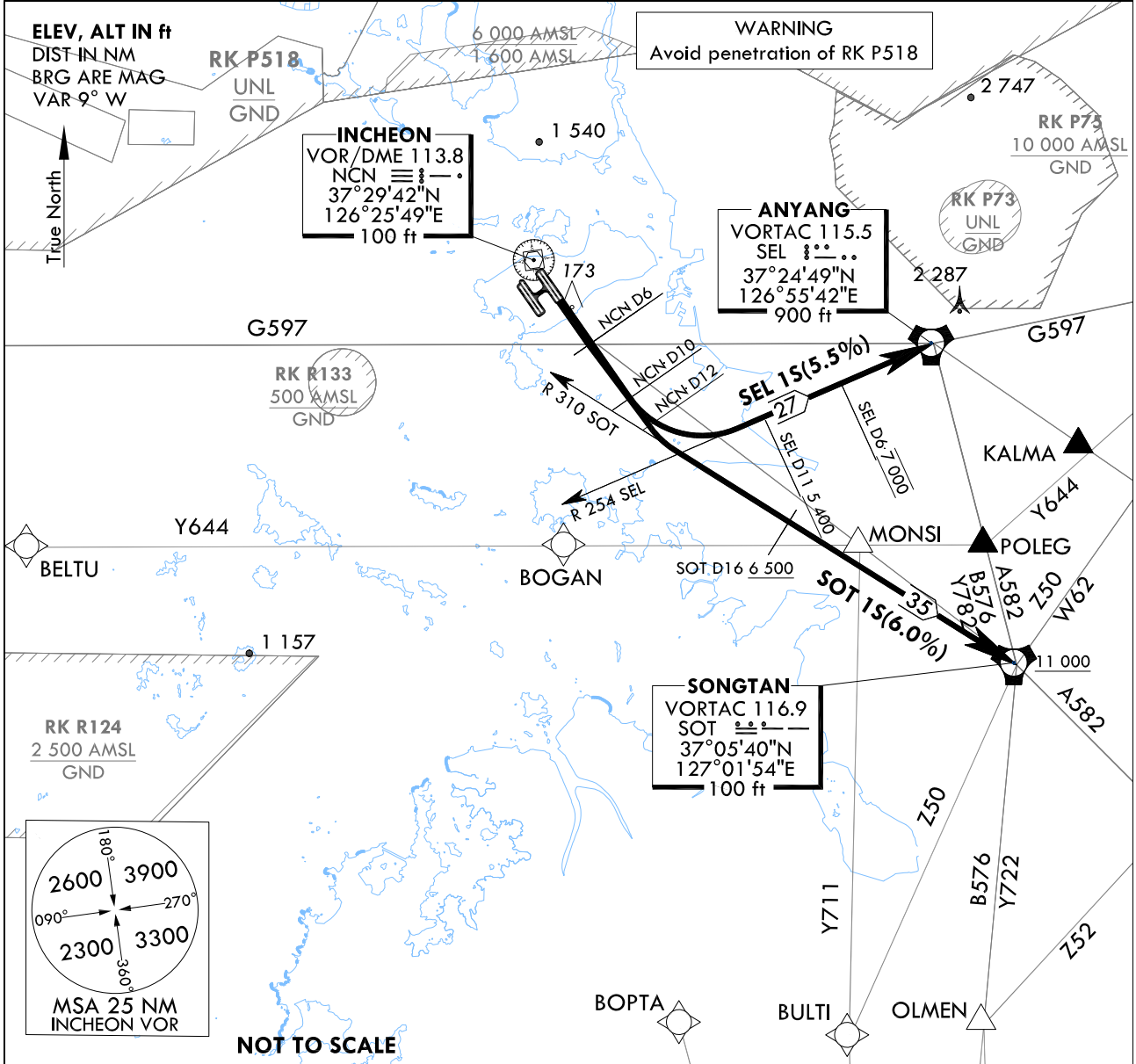
**STANDARD DEPARTURE CHART
INSTRUMENT (SID) - ICAO**

TRANSITION ALT 14 000
TRANSITION LVL FL 140

| | |
|-------------|--------|
| SEOUL DEP | 125.15 |
| | 121.4 |
| | 124.8 |
| INCHEON TWR | 118.2 |
| | 118.8 |

SEOUL/Incheon Intl(RKSI)
RWY 15L/R
SEL 15
SOT 15

Note : Departure under ICAO Flight Procedures.



GENERAL INFORMATION

- CG in excess of 3.3% necessary and also strict adherence to CG required for airspace, ATC and noise abatement purposes.
 - SEL 15 minimum CG 5.5% to 7 000 ft.
 - SOT 15 minimum CG 6.0% to FL 170.
- If unable to comply with flight restrictions, advise ATC well before departure for alternatives.
- Step climb : Due to interaction with other routes, do NOT climb above 7 000 ft unless cleared by ATC.

SEL(ANYANG) ONE SIERRA DEPARTURE

TAKE OFF RWY 15L : Climb on R 153 NCN , thence...
 TAKE OFF RWY 15R : Climb straight ahead, at NCN D6 turn left onto R 153 NCN, thence...
 at NCN D10 turn left to intercept R 254 SEL and proceed to SEL, fly by SEL.
 Cross SEL D11 at or above 5 400 ft and SEL D6 at 7 000 ft until instructed by ATC.

SOT(SONGTAN) ONE SIERRA DEPARTURE

TAKE OFF RWY 15L : Climb on R 153 NCN, thence...
 TAKE OFF RWY 15R : Climb straight ahead, at NCN D6 turn left onto R 153 NCN, thence...
 at NCN D12 turn left to intercept R 310 SOT and proceed SOT. At or above 6 500 ft
 by SOT D16, at or above 11 000 ft by SOT and at or above FL 150 by
 SOT D8 on A582 or B576. Maintain 7 000 ft until instructed by ATC.

Change : Information of RK P73.

INTENTIONALLY

LEFT

BLANK

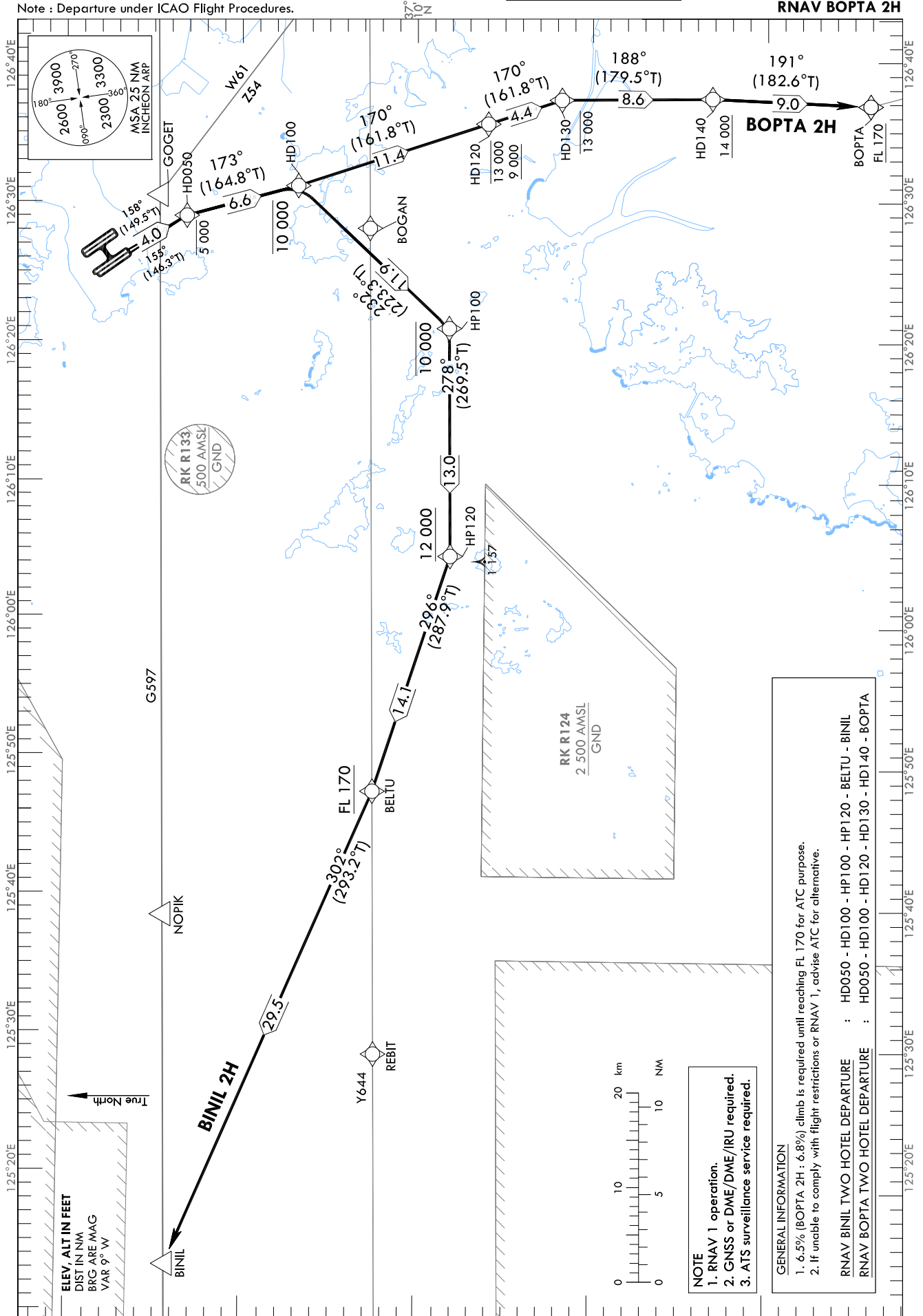
STANDARD DEPARTURE CHART
INSTRUMENT (SID) - ICAO

TRANSITION ALT 14 000
TRANSITION LVL FL 140

SEOUL DEP 125.15 121.4
124.8
INCHEON TWR 118.2 118.8
DAEGU ACC 132.8

SEOUL/Incheon Int'l(RKSI)
RWY 16L/R
RNAV BINIL 2H
RNAV BOPTA 2H

Note : Departure under ICAO Flight Procedures.



Change : Information of ACC FREQ(Incheon → Daegu).

NOTE
1. RNAV 1 operation.
2. GNSS or DME/DME/IRU required.
3. ATS surveillance service required.

GENERAL INFORMATION
1. 6.5% (BOPTA 2H : 6.8%) climb is required until reaching FL 170 for ATC purpose.
2. If unable to comply with flight restrictions or RNAV 1, advise ATC for alternative.
RNAV BINIL TWO HOTEL DEPARTURE : HD050 - HD100 - HP100 - HP120 - BELTU - BINIL
RNAV BOPTA TWO HOTEL DEPARTURE : HD050 - HD100 - HD120 - HD130 - HD140 - BOPTA

SEOUL/Incheon Intl(RKSI)
RWY 16L/R
RNAV BINIL 2H, RNAV BOPTA 2H

AERONAUTICAL DATA TABULATION

Standard Instrument Departure Procedure Coding Tables

| Serial Number | Path Descriptor | Waypoint Identifier | Fly-over | Course/Track °M(°T) | Distance (NM) | Turn direction | Altitude (ft) | Speed (kt) | Coordinates | VPA/ RDH | Navigation specification | Remarks |
|---------------|-----------------|---------------------|----------|----------------------------------|------------------|----------------|------------------|---------------|----------------------------|-------------|--------------------------|---------|
| 001 | CF | HD050 | - | 161-158(149.5) 168-155(146.3) | 4.0 | R | -5 000 | - | 37°23'08.6"N 126°29'03.7"E | - | RNAV 1 | - |
| 002 | TF | HD100 | - | 173 (164.8) | 6.6 | - | -10 000 | - | 37°16'47.0"N 126°31'13.0"E | - | RNAV 1 | - |
| 003 | TF | HP100 | - | 232 (223.3) | 11.9 | - | -10 000 | - | 37°08'07.8"N 126°21'03.5"E | - | RNAV 1 | - |
| 004 | TF | HP120 | - | 278 (269.5) | 13.0 | - | +12 000 | - | 37°07'59.2"N 126°04'48.1"E | - | RNAV 1 | - |
| 005 | TF | BELTU | - | 296 (287.9) | 14.1 | - | +FL 170 | - | 37°12'18.0"N 125°47'59.0"E | - | RNAV 1 | - |
| 006 | TF | BINIL | - | 302 (293.2) | 29.5 | - | - | - | 37°23'49.2"N 125°13'59.3"E | - | RNAV 1 | - |

| Serial Number | Path Descriptor | Waypoint Identifier | Fly-over | Course/Track °M(°T) | Distance (NM) | Turn direction | Altitude (ft) | Speed (kt) | Coordinates | VPA/ RDH | Navigation specification | Remarks |
|---------------|-----------------|---------------------|----------|----------------------------------|------------------|----------------|-------------------|---------------|----------------------------|-------------|--------------------------|---------|
| 001 | CF | HD050 | - | 161-158(149.5) 168-155(146.3) | 4.0 | R | -5 000 | - | 37°23'08.6"N 126°29'03.7"E | - | RNAV 1 | - |
| 002 | TF | HD100 | - | 173 (164.8) | 6.6 | - | -10 000 | - | 37°16'47.0"N 126°31'13.0"E | - | RNAV 1 | - |
| 003 | TF | HD120 | - | 170 (161.8) | 11.4 | - | -13 000 +9 000 | - | 37°05'56.6"N 126°35'39.9"E | - | RNAV 1 | - |
| 004 | TF | HD130 | - | 170 (161.8) | 4.4 | - | -13 000 | - | 37°01'44.4"N 126°37'23.0"E | - | RNAV 1 | - |
| 005 | TF | HD140 | - | 188 (179.5) | 8.6 | - | +14 000 | - | 36°53'08.6"N 126°37'29.0"E | - | RNAV 1 | - |
| 006 | TF | BOPTA | - | 191 (182.6) | 9.0 | - | +FL 170 | - | 36°44'06.4"N 126°36'58.4"E | - | RNAV 1 | - |

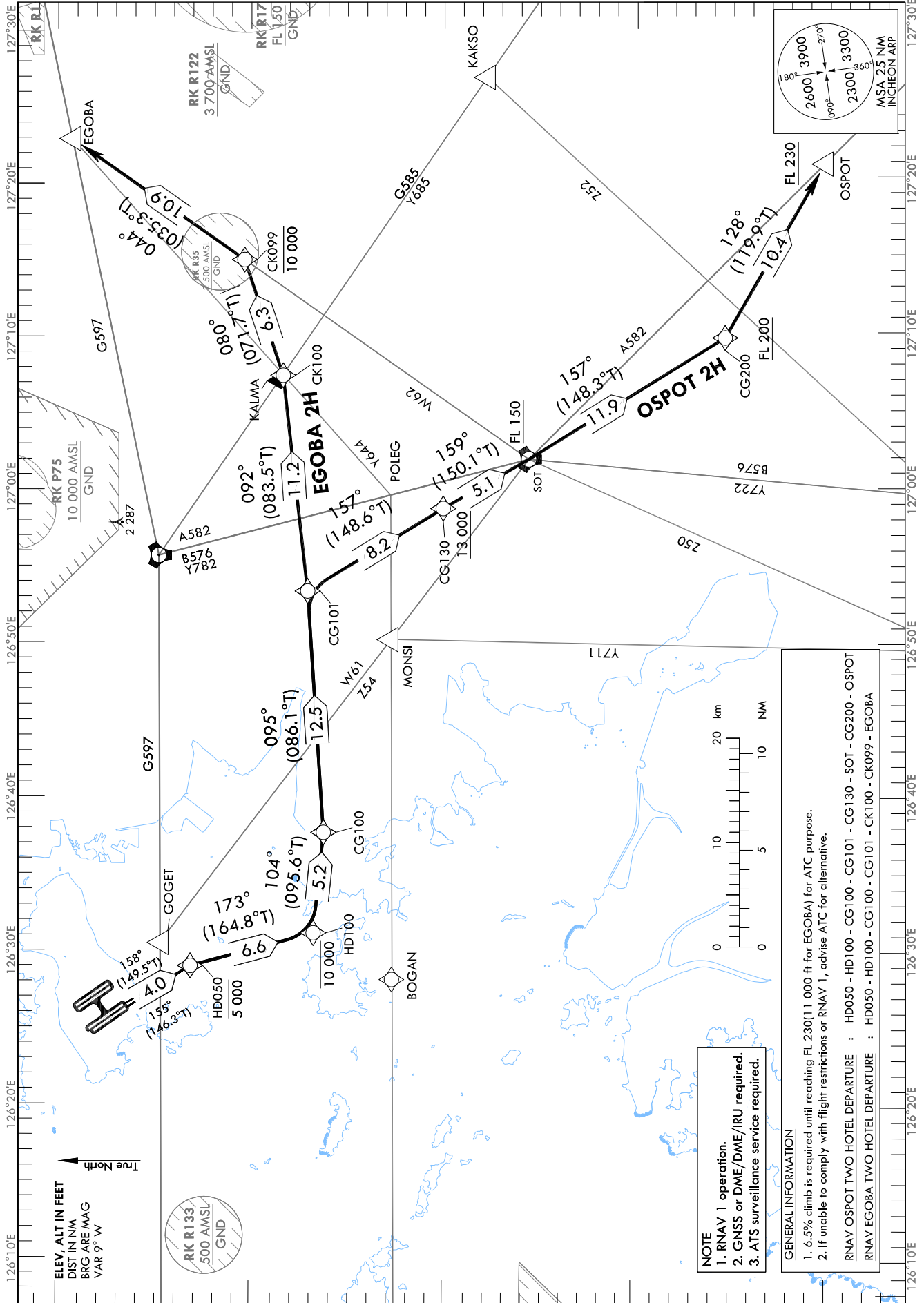
STANDARD DEPARTURE CHART
INSTRUMENT (SID) - ICAO

TRANSITION ALT 14 000
TRANSITION LVL FL 140

| | |
|-------------|--------|
| SEOUL DEP | 125.15 |
| | 121.4 |
| | 124.8 |
| INCHEON TWR | 118.2 |
| | 118.8 |

SEOUL/Incheon Intl(RKSI)
RWY 16L/R
RNAV OSPOT 2H
RNAV EGOBA 2H

Note : Departure under ICAO Flight Procedures.



Change : Information of RK P73 and Withdrawal of ALT restriction for EGOBA.

NOTE
1. RNAV 1 operation.
2. GNSS or DME/DME/IRU required.
3. ATS surveillance service required.

GENERAL INFORMATION
1. 6.5% climb is required until reaching FL 230(11 000 ft for EGOBA) for ATC purpose.
2. If unable to comply with flight restrictions or RNAV 1, advise ATC for alternative.

RNAV OSPOT TWO HOTEL DEPARTURE : HD050 - HD100 - CG100 - CG101 - CG130 - SOT - CG200 - OSPOT
RNAV EGOBA TWO HOTEL DEPARTURE : HD050 - HD100 - CG100 - CG101 - CK100 - CK099 - EGOBA

SEOUL/Incheon Intl(RKSI)
RWY 16L/R
RNAV OSPOT 2H, RNAV EGOBA 2H

AERONAUTICAL DATA TABULATION

Standard Instrument Departure Procedure Coding Tables

| RNAV OSPOT 2H | | | | | | | | | | | | |
|---------------|-----------------|---------------------|----------|----------------------------------|---------------|----------------|---------------|------------|----------------------------|---------|--------------------------|---------|
| Serial Number | Path Descriptor | Waypoint Identifier | Fly-over | Course/Track °M(°T) | Distance (NM) | Turn direction | Altitude (ft) | Speed (kt) | Coordinates | VPA/RDH | Navigation specification | Remarks |
| 001 | CF | HD050 | - | 16L-158(149.5) 16R-155(146.3) | 4.0 | R | -5 000 | - | 37°23'08.6"N 126°29'03.7"E | - | RNAV 1 | - |
| 002 | TF | HD100 | - | 173 (164.8) | 6.6 | - | -10 000 | - | 37°16'47.0"N 126°31'13.0"E | - | RNAV 1 | - |
| 003 | TF | CG100 | - | 104 (095.6) | 5.2 | - | - | - | 37°16'16.3"N 126°37'43.8"E | - | RNAV 1 | - |
| 004 | TF | CG101 | - | 095 (086.1) | 12.5 | - | - | - | 37°17'06.9"N 126°53'22.3"E | - | RNAV 1 | - |
| 005 | TF | CG130 | - | 157 (148.6) | 8.2 | - | +13 000 | - | 37°10'05.7"N 126°58'43.0"E | - | RNAV 1 | - |
| 006 | TF | SOT | - | 159 (150.1) | 5.1 | - | +FL 150 | - | 37°05'39.7"N 127°01'54.0"E | - | RNAV 1 | - |
| 007 | TF | CG200 | - | 157 (148.3) | 11.9 | - | +FL 200 | - | 36°55'29.2"N 127°09'43.6"E | - | RNAV 1 | - |
| 008 | TF | OSPOT | - | 128 (119.9) | 10.4 | - | +FL 230 | - | 36°50'18.1"N 127°20'54.9"E | - | RNAV 1 | - |

| RNAV EGOBA 2H | | | | | | | | | | | | |
|---------------|-----------------|---------------------|----------|----------------------------------|---------------|----------------|---------------|------------|----------------------------|---------|--------------------------|---------|
| Serial Number | Path Descriptor | Waypoint Identifier | Fly-over | Course/Track °M(°T) | Distance (NM) | Turn direction | Altitude (ft) | Speed (kt) | Coordinates | VPA/RDH | Navigation specification | Remarks |
| 001 | CF | HD050 | - | 16L-158(149.5) 16R-155(146.3) | 4.0 | R | -5 000 | - | 37°23'08.6"N 126°29'03.7"E | - | RNAV 1 | - |
| 002 | TF | HD100 | - | 173 (164.8) | 6.6 | - | -10 000 | - | 37°16'47.0"N 126°31'13.0"E | - | RNAV 1 | - |
| 003 | TF | CG100 | - | 104 (095.6) | 5.2 | - | - | - | 37°16'16.3"N 126°37'43.8"E | - | RNAV 1 | - |
| 004 | TF | CG101 | - | 095 (086.1) | 12.5 | - | - | - | 37°17'06.9"N 126°53'22.3"E | - | RNAV 1 | - |
| 005 | TF | CK100 | - | 092 (083.5) | 11.2 | - | - | - | 37°18'22.7"N 127°07'21.4"E | - | RNAV 1 | - |
| 006 | TF | CK099 | - | 080 (071.7) | 6.3 | - | -10 000 | - | 37°20'21.2"N 127°14'52.0"E | - | RNAV 1 | - |
| 007 | TF | EGOBA | - | 044 (035.3) | 10.9 | - | - | - | 37°29'14.7"N 127°22'45.9"E | - | RNAV 1 | - |

Change : Withdrawal of ALT restriction for EGOBA.

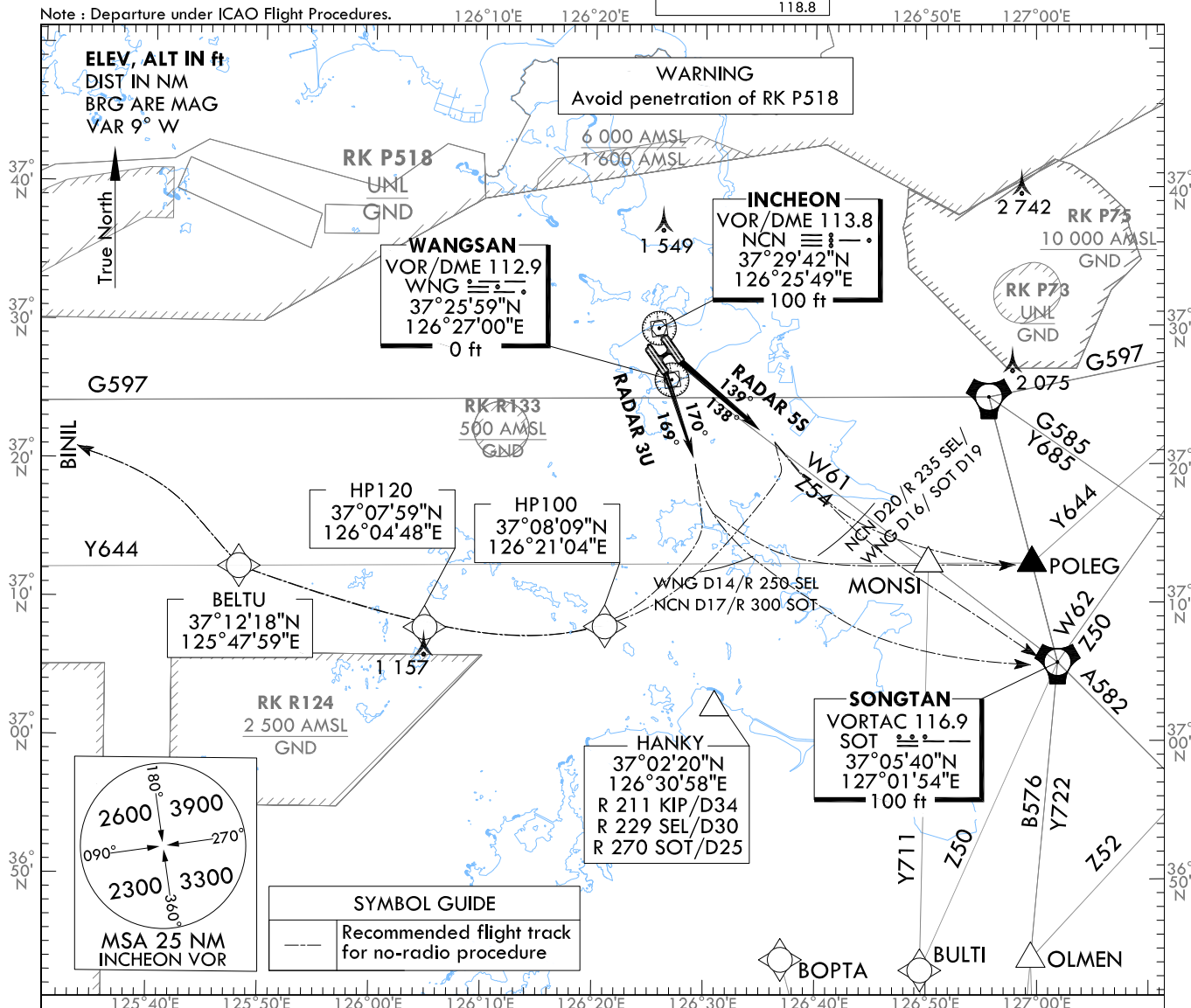
STANDARD DEPARTURE CHART
INSTRUMENT (SID) - ICAO

TRANSITION ALT 14 000
TRANSITION LVL FL 140

SEOUL DEP 125.15
121.4
124.8
INCHEON TWR 118.2
118.8

SEOUL/Incheon Intl(RKSI)
RWY 15L/R RADAR 5S
RWY 16L/R RADAR 3U

Note : Departure under ICAO Flight Procedures.



GENERAL INFORMATION

- 6.0% CG required until FL 150 for ATC and airspace purpose.
- Pilot shall use caution not to penetrate prohibited or restricted areas around airport.
- Aircraft may experience delay due to airspace use coordination, traffic volume, and so on.

RADAR FIVE SIERRA DEPARTURE

TAKE OFF RWY 15L : Climb HDG 139°, expect radar vector to airway. Maintain 7 000 ft until instructed by ATC.
TAKE OFF RWY 15R : Climb HDG 138°, expect radar vector to airway. Maintain 7 000 ft until instructed by ATC.

No radio procedure : If no radio contact with ATC, squawk 7600 , and unless otherwise instructed by ATC, proceed as follows.

- to SOT via R 315 SOT for A582, B576
- to intercept Y644 to POLEG, EGOBA, KARBU for G597
- to intercept R 290 SOT to BINIL or proceed direct to HP100, HP120, BELTU to BINIL for G597 as appropriate.

Pilot shall proceed as described above prior to reaching NCN D20 or R 235 SEL or WNG D16 or SOT D19 due to airspace.

RADAR THREE UNIFORM DEPARTURE

TAKE OFF RWY 16L : Climb HDG 170°, expect radar vector to airway. Maintain 7 000 ft until instructed by ATC.
TAKE OFF RWY 16R : Climb HDG 169°, expect radar vector to airway. Maintain 7 000 ft until instructed by ATC.

No radio procedure : If no radio contact with ATC, squawk 7600, and unless otherwise instructed by ATC proceed as follows.

- to SOT via R 307 SOT for A582, B576
- to intercept Y644 to POLEG, EGOBA, KARBU for G597
- to intercept R 290 SOT to BINIL or proceed direct to HP100, HP120, BELTU to BINIL for G597 as appropriate.

Pilot shall proceed as described above prior to reaching WNG D14 or R 250 SEL or NCN D17 or R 300 SOT due to airspace.

Change : Establishment of fix(HANKY).

INTENTIONALLY

LEFT

BLANK

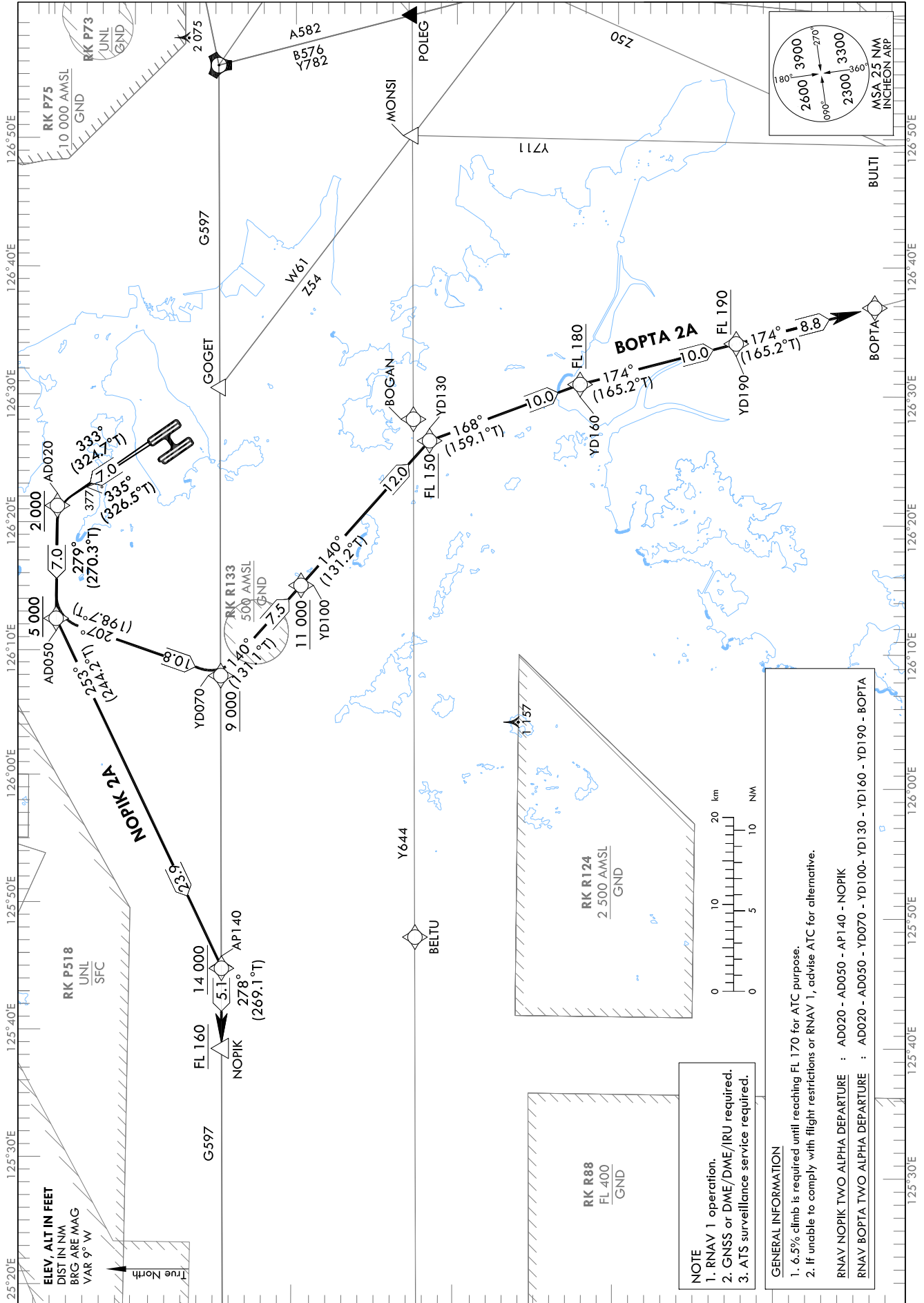
STANDARD DEPARTURE CHART
INSTRUMENT (SID) - ICAO

TRANSITION ALT 14 000
TRANSITION LVL FL 140

| | |
|-------------|--------|
| SEOUL DEP | 125.15 |
| | 121.4 |
| | 124.8 |
| INCHEON TWR | 118.2 |
| | 118.8 |

SEOUL/Incheon Int'l(RKSI)
RWY 33L/R
RNAV NOPIK 2A
RNAV BOPTA 2A

Note : Departure under ICAO Flight Procedures.



Change : Information of RK P73 and Withdrawal of ALT restriction for BOPTA.

SEOUL/Incheon Intl(RKSI)
RWY 33L/R
RNAV NOPIK 2A, RNAV BOPTA 2A

AERONAUTICAL DATA TABULATION

Standard Instrument Departure Procedure Coding Tables

| RNAV NOPIK 2A | | | | | | | | | | | | |
|---------------|-----------------|---------------------|----------|----------------------------------|---------------|----------------|---------------|------------|----------------------------|---------|--------------------------|---------|
| Serial Number | Path Descriptor | Waypoint Identifier | Fly-over | Course/Track °M(°T) | Distance (NM) | Turn direction | Altitude (ft) | Speed (kt) | Coordinates | VPA/RDH | Navigation specification | Remarks |
| 001 | CF | AD020 | - | 33L-335(326.5) 33R-333(324.7) | 7.0 | L | +2 000 | - | 37°34'45.1"N 126°21'19.0"E | - | RNAV 1 | - |
| 002 | TF | AD050 | - | 279 (270.3) | 7.0 | - | +5 000 | - | 37°34'46.7"N 126°12'30.6"E | - | RNAV 1 | - |
| 003 | TF | AP140 | - | 253 (244.2) | 23.9 | - | +14 000 | - | 37°24'16.9"N 125°45'21.4"E | - | RNAV 1 | - |
| 004 | TF | NOPIK | - | 278 (269.1) | 5.1 | - | +FL 160 | - | 37°24'12.0"N 125°39'05.0"E | - | RNAV 1 | - |

| RNAV BOPTA 2A | | | | | | | | | | | | |
|---------------|-----------------|---------------------|----------|----------------------------------|---------------|----------------|---------------|------------|----------------------------|---------|--------------------------|---------|
| Serial Number | Path Descriptor | Waypoint Identifier | Fly-over | Course/Track °M(°T) | Distance (NM) | Turn direction | Altitude (ft) | Speed (kt) | Coordinates | VPA/RDH | Navigation specification | Remarks |
| 001 | CF | AD020 | - | 33L-335(326.5) 33R-333(324.7) | 7.0 | L | +2 000 | - | 37°34'45.1"N 126°21'19.0"E | - | RNAV 1 | - |
| 002 | TF | AD050 | - | 279 (270.3) | 7.0 | - | +5 000 | - | 37°34'46.7"N 126°12'30.6"E | - | RNAV 1 | - |
| 003 | TF | YD070 | - | 207 (198.7) | 10.8 | - | +9 000 | - | 37°24'31.4"N 126°08'09.0"E | - | RNAV 1 | - |
| 004 | TF | YD100 | - | 140 (131.1) | 7.5 | - | +11 000 | - | 37°19'35.0"N 126°15'14.0"E | - | RNAV 1 | - |
| 005 | TF | YD130 | - | 140 (131.2) | 12.0 | - | +FL 150 | - | 37°11'39.7"N 126°26'32.1"E | - | RNAV 1 | - |
| 006 | TF | YD160 | - | 168 (159.1) | 10.0 | - | +FL 180 | - | 37°02'19.6"N 126°30'58.2"E | - | RNAV 1 | - |
| 007 | TF | YD190 | - | 174 (165.2) | 10.0 | - | +FL 190 | - | 36°52'38.3"N 126°34'10.0"E | - | RNAV 1 | - |
| 008 | TF | BOPTA | - | 174 (165.2) | 8.8 | - | - | - | 36°44'06.4"N 126°36'58.4"E | - | RNAV 1 | - |

Change : Withdrawal of ALT restriction for BOPTA.

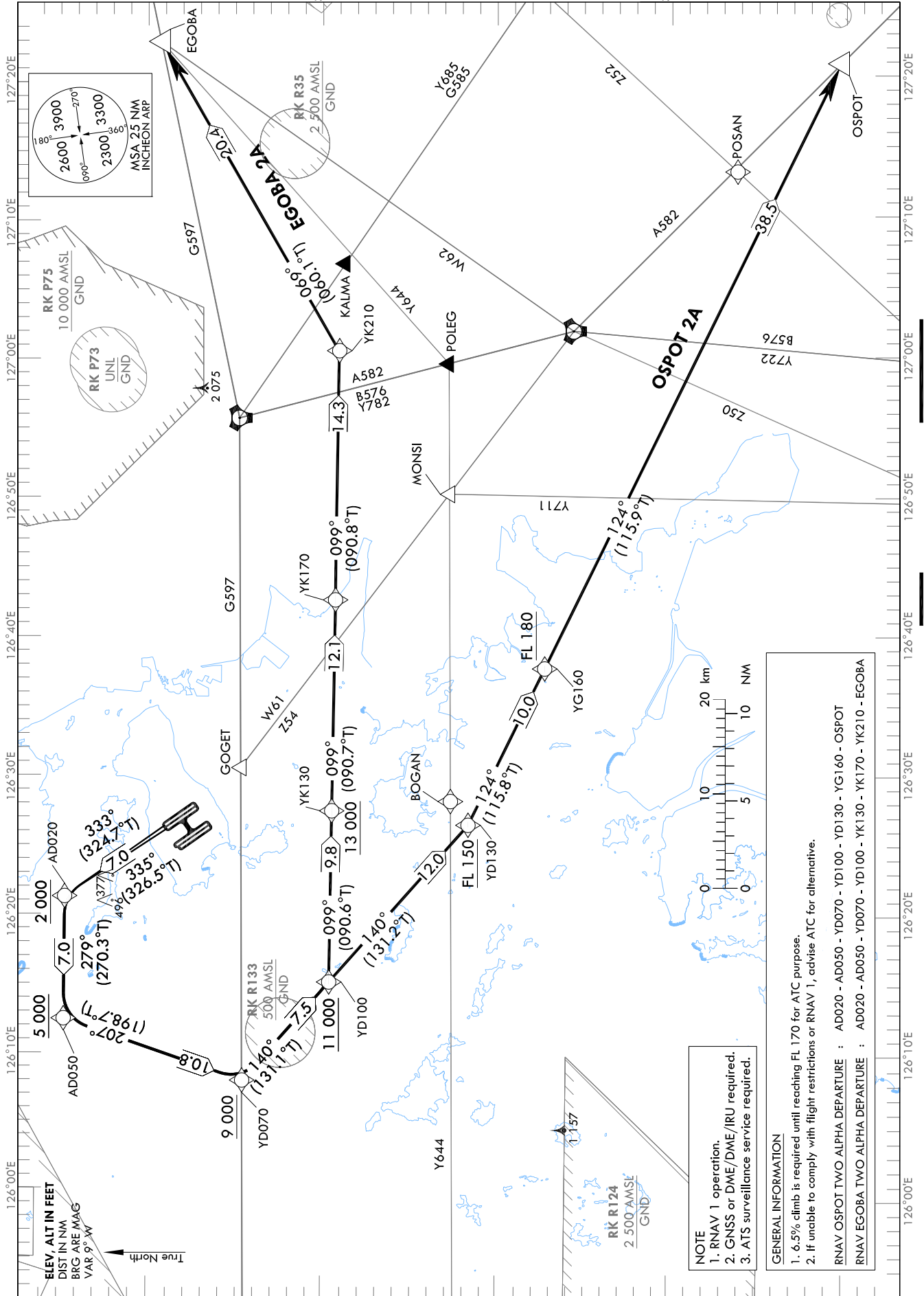
STANDARD DEPARTURE CHART
INSTRUMENT (SID) - ICAO

TRANSITION ALT 14 000
TRANSITION LVL FL 140

| | |
|-------------|--------|
| SEOUL DEP | 125.15 |
| | 121.4 |
| | 124.8 |
| INCHEON TWR | 118.2 |
| | 118.8 |

SEOUL/Incheon Int'l(RKSI)
RWY 33L/R
RNAV OSPOT 2A
RNAV EGOBA 2A

Note : Departure under ICAO Flight Procedures.



Change : Information of RK P73 and Withdrawal of ALT restriction for YK170.

SEOUL/Incheon Intl(RKSI)
RWY 33L/R
RNAV OSPOT 2A, RNAV EGOBA 2A

AERONAUTICAL DATA TABULATION

Standard Instrument Departure Procedure Coding Tables

| RNAV OSPOT 2A | | | | | | | | | | | | |
|---------------|-----------------|---------------------|----------|----------------------------------|---------------|----------------|---------------|------------|----------------------------|---------|--------------------------|---------|
| Serial Number | Path Descriptor | Waypoint Identifier | Fly-over | Course/Track °M(°T) | Distance (NM) | Turn direction | Altitude (ft) | Speed (kt) | Coordinates | VPA/RDH | Navigation specification | Remarks |
| 001 | CF | AD020 | - | 33L-335(326.5) 33R-333(324.7) | 7.0 | L | +2 000 | - | 37°34'45.1"N 126°21'19.0"E | - | RNAV 1 | - |
| 002 | TF | AD050 | - | 279 (270.3) | 7.0 | - | +5 000 | - | 37°34'46.7"N 126°12'30.6"E | - | RNAV 1 | - |
| 003 | TF | YD070 | - | 207 (198.7) | 10.8 | - | +9 000 | - | 37°24'31.4"N 126°08'09.0"E | - | RNAV 1 | - |
| 004 | TF | YD100 | - | 140 (131.1) | 7.5 | - | +11 000 | - | 37°19'35.0"N 126°15'14.0"E | - | RNAV 1 | - |
| 005 | TF | YD130 | - | 140 (131.2) | 12.0 | - | +FL 150 | - | 37°11'39.7"N 126°26'32.1"E | - | RNAV 1 | - |
| 006 | TF | YG160 | - | 124 (115.8) | 10.0 | - | +FL 180 | - | 37°07'18.5"N 126°37'44.9"E | - | RNAV 1 | - |
| 007 | TF | OSPOT | - | 124 (115.9) | 38.5 | - | - | - | 36°50'18.1"N 127°20'54.9"E | - | RNAV 1 | - |

| RNAV EGOBA 2A | | | | | | | | | | | | |
|---------------|-----------------|---------------------|----------|----------------------------------|---------------|----------------|---------------|------------|----------------------------|---------|--------------------------|---------|
| Serial Number | Path Descriptor | Waypoint Identifier | Fly-over | Course/Track °M(°T) | Distance (NM) | Turn direction | Altitude (ft) | Speed (kt) | Coordinates | VPA/RDH | Navigation specification | Remarks |
| 001 | CF | AD020 | - | 33L-335(326.5) 33R-333(324.7) | 7.0 | L | +2 000 | - | 37°34'45.1"N 126°21'19.0"E | - | RNAV 1 | - |
| 002 | TF | AD050 | - | 279 (270.3) | 7.0 | - | +5 000 | - | 37°34'46.7"N 126°12'30.6"E | - | RNAV 1 | - |
| 003 | TF | YD070 | - | 207 (198.7) | 10.8 | - | +9 000 | - | 37°24'31.4"N 126°08'09.0"E | - | RNAV 1 | - |
| 004 | TF | YD100 | - | 140 (131.1) | 7.5 | - | +11 000 | - | 37°19'35.0"N 126°15'14.0"E | - | RNAV 1 | - |
| 005 | TF | YK130 | - | 099 (090.6) | 9.8 | - | +13 000 | - | 37°19'28.6"N 126°27'31.1"E | - | RNAV 1 | - |
| 006 | TF | YK170 | - | 099 (090.7) | 12.1 | - | - | - | 37°19'18.2"N 126°42'38.8"E | - | RNAV 1 | - |
| 007 | TF | YK210 | - | 099 (090.8) | 14.3 | - | - | - | 37°19'05.3"N 127°00'31.4"E | - | RNAV 1 | - |
| 008 | TF | EGOBA | - | 069 (060.1) | 20.4 | - | - | - | 37°29'14.7"N 127°22'45.9"E | - | RNAV 1 | - |

Change : Withdrawal of ALT restriction for YK170.

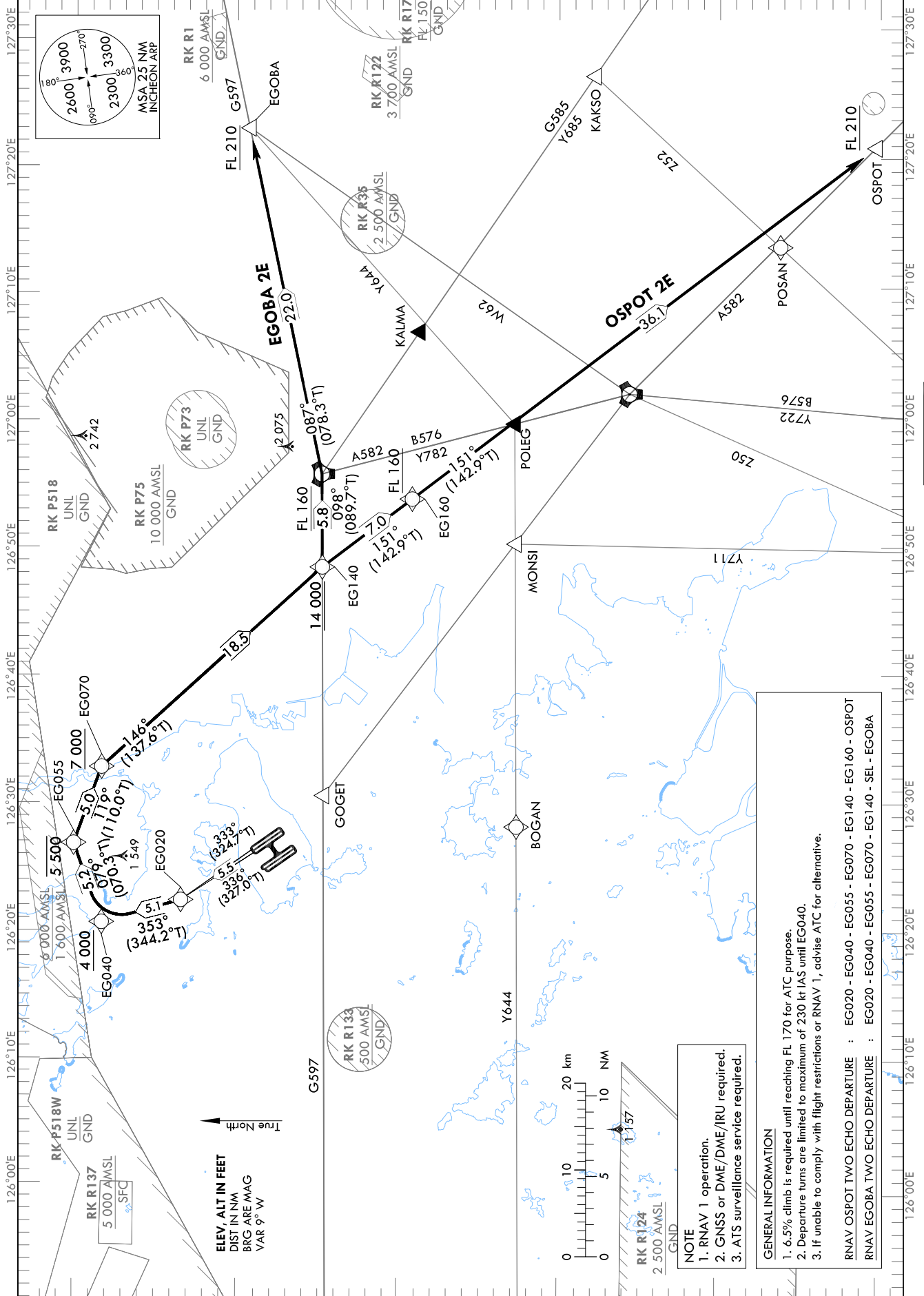
STANDARD DEPARTURE CHART
INSTRUMENT (SID) - ICAO

TRANSITION ALT 14 000
TRANSITION LVL FL 140

| | |
|-------------|--------|
| SEOUL DEP | 125.15 |
| | 121.4 |
| | 124.8 |
| INCHEON TWR | 118.2 |
| | 118.8 |

SEOUL/Incheon Intl(RKSI)
RWY 33L/R
RNAV OSPOT 2E
RNAV EGOBA 2E

Note : Departure under ICAO Flight Procedures.



Change : Information of RK P73.

SEOUL/Incheon Intl(RKSI)
RWY 33L/R
RNAV OSPOT 2E, RNAV EGOBA 2E

AERONAUTICAL DATA TABULATION

Standard Instrument Departure Procedure Coding Tables

| RNAV OSPOT 2E | | | | | | | | | | | | |
|---------------|-----------------|---------------------|----------|----------------------------------|---------------|----------------|---------------|------------|----------------------------|---------|--------------------------|---------|
| Serial Number | Path Descriptor | Waypoint Identifier | Fly-over | Course/Track °M(°T) | Distance (NM) | Turn direction | Altitude (ft) | Speed (kt) | Coordinates | VPA/RDH | Navigation specification | Remarks |
| 001 | CF | EG020 | - | 33L-336(327.0) 33R-333(324.7) | 5.5 | R | - | -230 | 37°33'31.6"N 126°22'24.5"E | - | RNAV 1 | - |
| 002 | TF | EG040 | - | 353 (344.2) | 5.1 | - | +4 000 | -230 | 37°38'27.4"N 126°20'39.1"E | - | RNAV 1 | - |
| 003 | TF | EG055 | - | 079 (070.3) | 5.2 | - | -5 500 | - | 37°40'12.7"N 126°26'50.5"E | - | RNAV 1 | - |
| 004 | TF | EG070 | - | 119 (110.0) | 5.0 | - | +7 000 | - | 37°38'29.2"N 126°32'48.6"E | - | RNAV 1 | - |
| 005 | TF | EG140 | - | 146 (137.6) | 18.5 | - | +14 000 | - | 37°24'47.5"N 126°48'26.5"E | - | RNAV 1 | - |
| 006 | TF | EG160 | - | 151 (142.9) | 7.0 | - | +FL 160 | - | 37°19'11.6"N 126°53'44.6"E | - | RNAV 1 | - |
| 007 | TF | OSPOT | - | 151 (142.9) | 36.1 | - | +FL 210 | - | 36°50'18.1"N 127°20'54.9"E | - | RNAV 1 | - |

| RNAV EGOBA 2E | | | | | | | | | | | | |
|---------------|-----------------|---------------------|----------|----------------------------------|---------------|----------------|---------------|------------|----------------------------|---------|--------------------------|---------|
| Serial Number | Path Descriptor | Waypoint Identifier | Fly-over | Course/Track °M(°T) | Distance (NM) | Turn direction | Altitude (ft) | Speed (kt) | Coordinates | VPA/RDH | Navigation specification | Remarks |
| 001 | CF | EG020 | - | 33L-336(327.0) 33R-333(324.7) | 5.5 | R | - | -230 | 37°33'31.6"N 126°22'24.5"E | - | RNAV 1 | - |
| 002 | TF | EG040 | - | 353 (344.2) | 5.1 | - | +4 000 | -230 | 37°38'27.4"N 126°20'39.1"E | - | RNAV 1 | - |
| 003 | TF | EG055 | - | 079 (070.3) | 5.2 | - | -5 500 | - | 37°40'12.7"N 126°26'50.5"E | - | RNAV 1 | - |
| 004 | TF | EG070 | - | 119 (110.0) | 5.0 | - | +7 000 | - | 37°38'29.2"N 126°32'48.6"E | - | RNAV 1 | - |
| 005 | TF | EG140 | - | 146 (137.6) | 18.5 | - | +14 000 | - | 37°24'47.5"N 126°48'26.5"E | - | RNAV 1 | - |
| 006 | TF | SEL | - | 098 (089.7) | 5.8 | - | +FL 160 | - | 37°24'49.0"N 126°55'42.1"E | - | RNAV 1 | - |
| 007 | TF | EGOBA | - | 087 (078.3) | 22.0 | - | +FL 210 | - | 37°29'14.7"N 127°22'45.9"E | - | RNAV 1 | - |

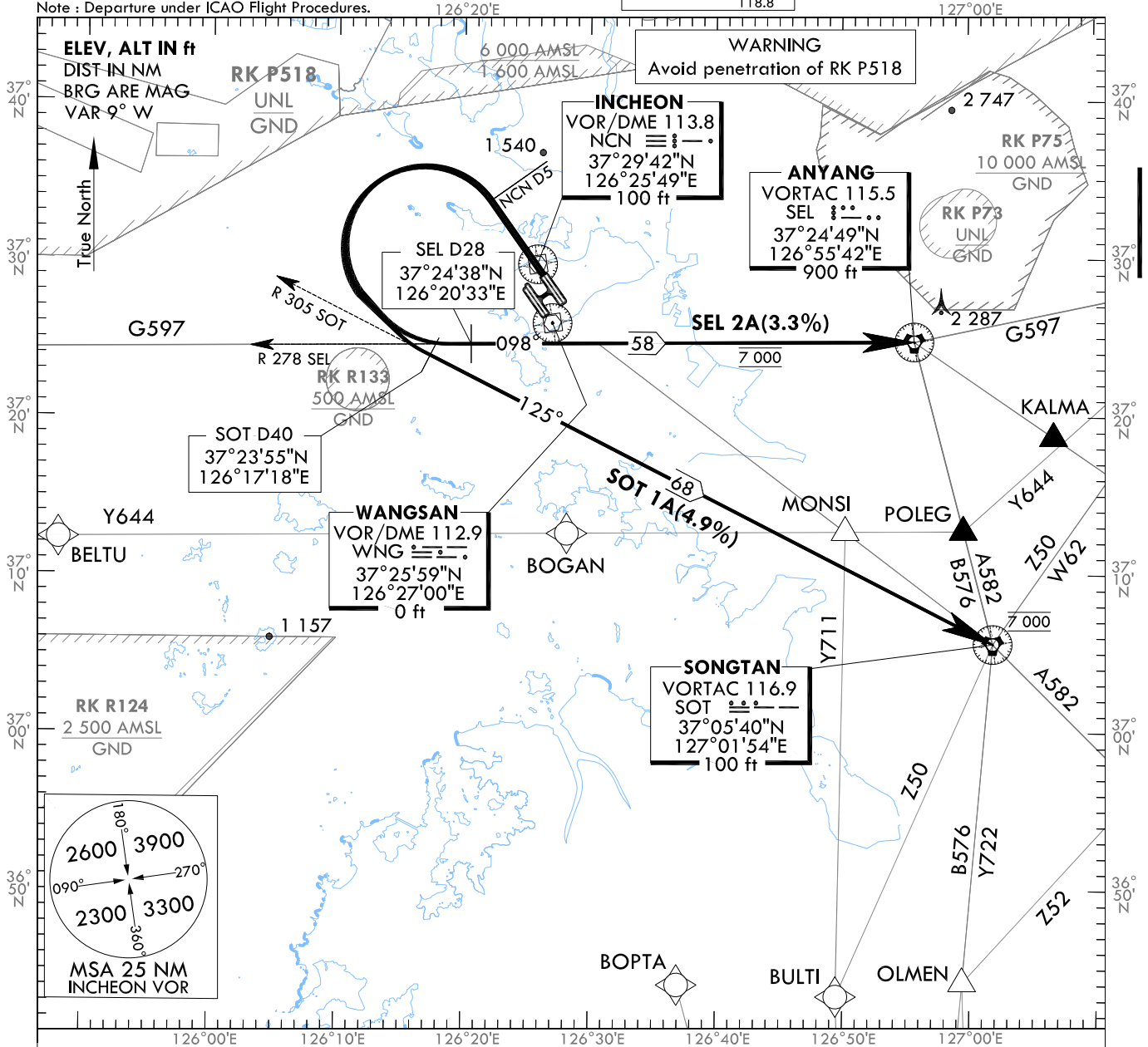
STANDARD DEPARTURE CHART
INSTRUMENT (SID) - ICAO

TRANSITION ALT 14 000
TRANSITION LVL FL 140

SEOUL DEP 125.15
121.4
124.8
INCHEON TWR 118.2
118.8

SEOUL/Incheon Intl(RKSI)
RWY 33L/R
SEL 2A, SOT 1A

Note : Departure under ICAO Flight Procedures.



GENERAL INFORMATION

1. CG in excess of 3.3% necessary for Airspace and ATC purposes.
 - 1.1 SOT 1A minimum CG 4.9% to FL 170.
2. After NCN D5, 15 degree bank angle recommended during turn for noise abatement and pilot should use caution not to penetrate prohibited area. (RK P518)
3. If unable to comply with flight restrictions, advise ATC well before departure for alternatives.
4. Step climb : Due to interaction with other routes, do NOT climb above 7 000 ft unless cleared by ATC.
5. Pilot shall use caution not to make early or lead turn prior to reaching NCN D5.

SEL(ANYANG) TWO ALPHA DEPARTURE

TAKE OFF RWY 33L/R : Climb straight ahead, at NCN D5 turn left to intercept R 278 SEL and cross.
R 278 SEL/D28 then proceed to SEL. Maintain 7 000 ft until instructed by ATC.

SOT(SONGTAN) ONE ALPHA DEPARTURE

TAKE OFF RWY 33L/R : Climb straight ahead, at NCN D5 turn left to intercept R 305 SOT and cross
R 305 SOT/D40 then proceed to SOT. Maintain 7 000 ft until instructed by ATC.

Change : Information of RK P73.

INTENTIONALLY

LEFT

BLANK

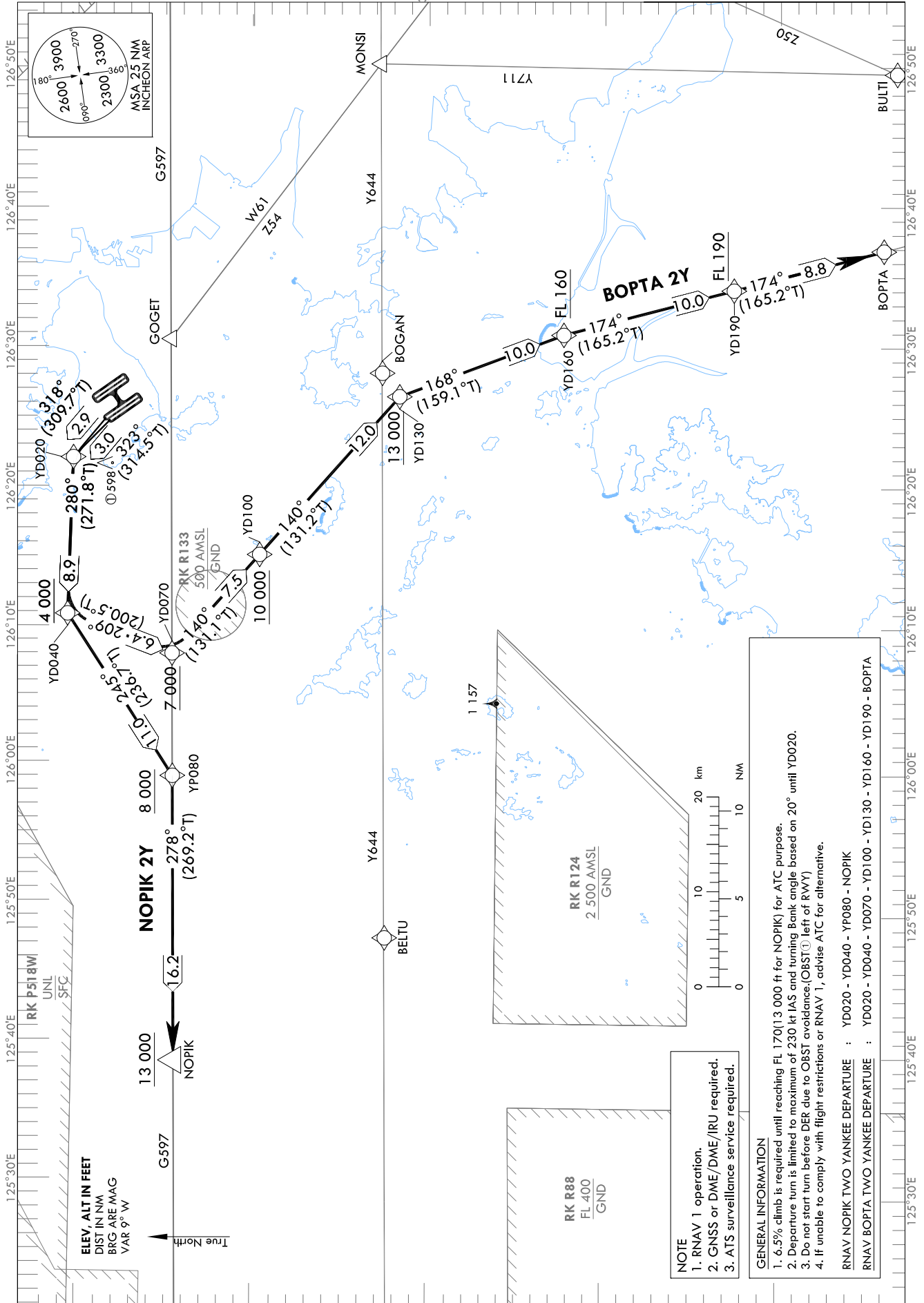
STANDARD DEPARTURE CHART
INSTRUMENT (SID) - ICAO

TRANSITION ALT 14 000
TRANSITION LVL FL 140

| | |
|-------------|--------|
| SEOUL DEP | 125.15 |
| | 121.4 |
| | 124.8 |
| INCHEON TWR | 118.2 |
| | 118.8 |

SEOUL/Incheon Intl(RKSI)
RWY 34L/R
RNAV NOPIK 2Y
RNAV BOPTA 2Y

Note : Departure under ICAO Flight Procedures.



ELEV, ALT IN FEET
DIST IN NM
BRG ARE MAG
VAR 9° W

NOPIK 2Y
278°
(269.2°T)

BOPTA 2Y
174°
(165.2°T)

NOTE
1. RNAV 1 operation.
2. GNSS or DME/DME/IRU required.
3. ATS surveillance service required.

GENERAL INFORMATION

- 6.5% climb is required until reaching FL 170 (13 000 ft for NOPIK) for ATC purpose.
- Departure turn is limited to maximum of 230 kt IAS and turning Bank angle based on 20° until YD020.
- Do not start turn before DER due to OBST avoidance (OBST① left of RWY)
- If unable to comply with flight restrictions or RNAV 1, advise ATC for alternative.

RNAV NOPIK TWO YANKEE DEPARTURE : YD020 - YD040 - YP080 - NOPIK
RNAV BOPTA TWO YANKEE DEPARTURE : YD020 - YD040 - YD070 - YD100 - YD130 - YD160 - YD190 - BOPTA

Change : Information of RK P73 and Withdrawal of ALT restriction for BOPTA.

SEOUL/Incheon Intl(RKSI)
RWY 34L/R
RNAV NOPIK 2Y, RNAV BOPTA 2Y

AERONAUTICAL DATA TABULATION

Standard Instrument Departure Procedure Coding Tables

| RNAV NOPIK 2Y | | | | | | | | | | | | |
|---------------|-----------------|---------------------|----------|----------------------------------|--------------------|----------------|---------------|------------|----------------------------|---------|--------------------------|----------------|
| Serial Number | Path Descriptor | Waypoint Identifier | Fly-over | Course/Track °M(°T) | Distance (NM) | Turn direction | Altitude (ft) | Speed (kt) | Coordinates | VPA/RDH | Navigation specification | Remarks |
| 001 | CF | YD020 | - | 34L-323(314.5) 34R-318(309.7) | 34L-3.0 34R-2.9 | L | - | -230 | 37°30'13.3"N 126°22'07.7"E | - | RNAV 1 | Bank angle 20° |
| 002 | TF | YD040 | - | 280 (271.8) | 8.9 | - | +4 000 | - | 37°30'29.6"N 126°10'56.9"E | - | RNAV 1 | - |
| 003 | TF | YP080 | - | 245 (236.7) | 11.0 | - | +8 000 | - | 37°24'26.5"N 125°59'24.4"E | - | RNAV 1 | - |
| 004 | TF | NOPIK | - | 278 (269.2) | 16.2 | - | +13 000 | - | 37°24'12.0"N 125°39'05.0"E | - | RNAV 1 | - |

| RNAV BOPTA 2Y | | | | | | | | | | | | |
|---------------|-----------------|---------------------|----------|----------------------------------|--------------------|----------------|---------------|------------|----------------------------|---------|--------------------------|----------------|
| Serial Number | Path Descriptor | Waypoint Identifier | Fly-over | Course/Track °M(°T) | Distance (NM) | Turn direction | Altitude (ft) | Speed (kt) | Coordinates | VPA/RDH | Navigation specification | Remarks |
| 001 | CF | YD020 | - | 34L-323(314.5) 34R-318(309.7) | 34L-3.0 34R-2.9 | L | - | -230 | 37°30'13.3"N 126°22'07.7"E | - | RNAV 1 | Bank angle 20° |
| 002 | TF | YD040 | - | 280 (271.8) | 8.9 | - | +4 000 | - | 37°30'29.6"N 126°10'56.9"E | - | RNAV 1 | - |
| 003 | TF | YD070 | - | 209 (200.5) | 6.4 | - | +7 000 | - | 37°24'31.4"N 126°08'09.0"E | - | RNAV 1 | - |
| 004 | TF | YD100 | - | 140 (131.1) | 7.5 | - | +10 000 | - | 37°19'35.0"N 126°15'14.0"E | - | RNAV 1 | - |
| 005 | TF | YD130 | - | 140 (131.2) | 12.0 | - | +13 000 | - | 37°11'39.7"N 126°26'32.1"E | - | RNAV 1 | - |
| 006 | TF | YD160 | - | 168 (159.1) | 10.0 | - | +FL 160 | - | 37°02'19.6"N 126°30'58.2"E | - | RNAV 1 | - |
| 007 | TF | YD190 | - | 174 (165.2) | 10.0 | - | +FL 190 | - | 36°52'38.3"N 126°34'10.0"E | - | RNAV 1 | - |
| 008 | TF | BOPTA | - | 174 (165.2) | 8.8 | - | - | - | 36°44'06.4"N 126°36'58.4"E | - | RNAV 1 | - |

Change : Withdrawal of ALT restriction for BOPTA.

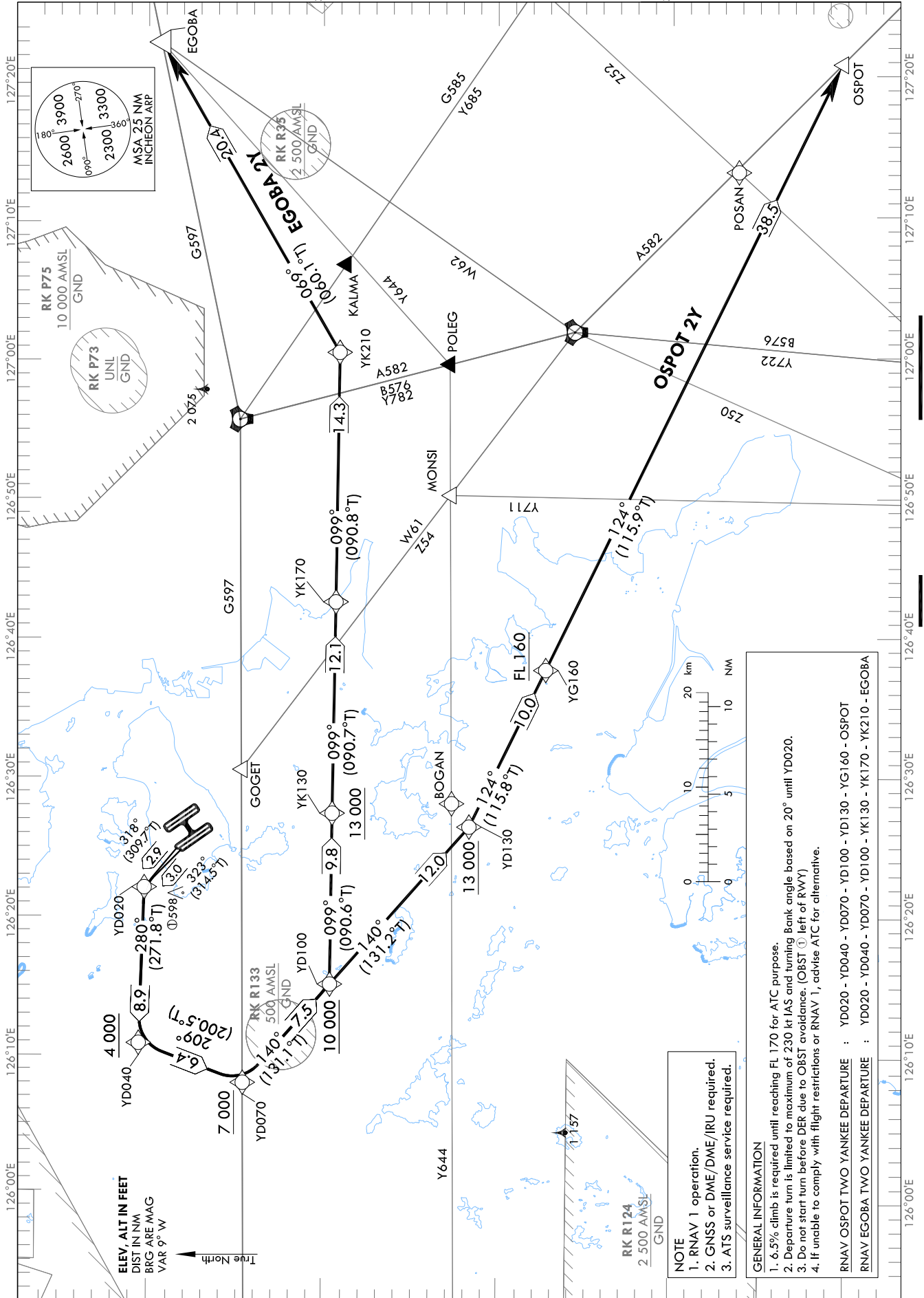
STANDARD DEPARTURE CHART
INSTRUMENT (SID) - ICAO

TRANSITION ALT 14 000
TRANSITION LVL FL 140

| | |
|-------------|--------|
| SEOUL DEP | 125.15 |
| | 121.4 |
| | 124.8 |
| INCHEON TWR | 118.2 |
| | 118.8 |

SEOUL/Incheon Int'l(RKSI)
RWY 34L/R
RNAV OSPOT 2Y
RNAV EGOBA 2Y

Note : Departure under ICAO Flight Procedures.



Change : Information of RK P73 and Withdrawal of ALT restriction for YK170.

SEOUL/Incheon Intl(RKSI)
RWY 34L/R
RNAV OSPOT 2Y, RNAV EGOBA 2Y

AERONAUTICAL DATA TABULATION

Standard Instrument Departure Procedure Coding Tables

| RNAV OSPOT 2Y | | | | | | | | | | | | |
|---------------|-----------------|---------------------|----------|----------------------------------|--------------------|----------------|---------------|------------|----------------------------|---------|--------------------------|----------------|
| Serial Number | Path Descriptor | Waypoint Identifier | Fly-over | Course/Track °M(°T) | Distance (NM) | Turn direction | Altitude (ft) | Speed (kt) | Coordinates | VPA/RDH | Navigation specification | Remarks |
| 001 | CF | YD020 | - | 34L-323(314.5) 34R-318(309.7) | 34L-3.0 34R-2.9 | L | - | -230 | 37°30'13.3"N 126°22'07.7"E | - | RNAV 1 | Bank angle 20° |
| 002 | TF | YD040 | - | 280 (271.8) | 8.9 | - | +4 000 | - | 37°30'29.6"N 126°10'56.9"E | - | RNAV 1 | - |
| 003 | TF | YD070 | - | 209 (200.5) | 6.4 | - | +7 000 | - | 37°24'31.4"N 126°08'09.0"E | - | RNAV 1 | - |
| 004 | TF | YD100 | - | 140 (131.1) | 7.5 | - | +10 000 | - | 37°19'35.0"N 126°15'14.0"E | - | RNAV 1 | - |
| 005 | TF | YD130 | - | 140 (131.2) | 12.0 | - | +13 000 | - | 37°11'39.7"N 126°26'32.1"E | - | RNAV 1 | - |
| 006 | TF | YG160 | - | 124 (115.8) | 10.0 | - | +FL 160 | - | 37°07'18.5"N 126°37'44.9"E | - | RNAV 1 | - |
| 007 | TF | OSPOT | - | 124 (115.9) | 38.5 | - | - | - | 36°50'18.1"N 127°20'54.9"E | - | RNAV 1 | - |

| RNAV EGOBA 2Y | | | | | | | | | | | | |
|---------------|-----------------|---------------------|----------|----------------------------------|--------------------|----------------|---------------|------------|----------------------------|---------|--------------------------|----------------|
| Serial Number | Path Descriptor | Waypoint Identifier | Fly-over | Course/Track °M(°T) | Distance (NM) | Turn direction | Altitude (ft) | Speed (kt) | Coordinates | VPA/RDH | Navigation specification | Remarks |
| 001 | CF | YD020 | - | 34L-323(314.5) 34R-318(309.7) | 34L-3.0 34R-2.9 | L | - | -230 | 37°30'13.3"N 126°22'07.7"E | - | RNAV 1 | Bank angle 20° |
| 002 | TF | YD040 | - | 280 (271.8) | 8.9 | - | +4 000 | - | 37°30'29.6"N 126°10'56.9"E | - | RNAV 1 | - |
| 003 | TF | YD070 | - | 209 (200.5) | 6.4 | - | +7 000 | - | 37°24'31.4"N 126°08'09.0"E | - | RNAV 1 | - |
| 004 | TF | YD100 | - | 140 (131.1) | 7.5 | - | +10 000 | - | 37°19'35.0"N 126°15'14.0"E | - | RNAV 1 | - |
| 005 | TF | YK130 | - | 099 (090.6) | 9.8 | - | +13 000 | - | 37°19'28.6"N 126°27'31.1"E | - | RNAV 1 | - |
| 006 | TF | YK170 | - | 099 (090.7) | 12.1 | - | - | - | 37°19'18.2"N 126°42'38.8"E | - | RNAV 1 | - |
| 007 | TF | YK210 | - | 099 (090.8) | 14.3 | - | - | - | 37°19'05.3"N 127°00'31.4"E | - | RNAV 1 | - |
| 008 | TF | EGOBA | - | 069 (060.1) | 20.4 | - | - | - | 37°29'14.7"N 127°22'45.9"E | - | RNAV 1 | - |

Change : Withdrawal of ALT restriction for YK170.

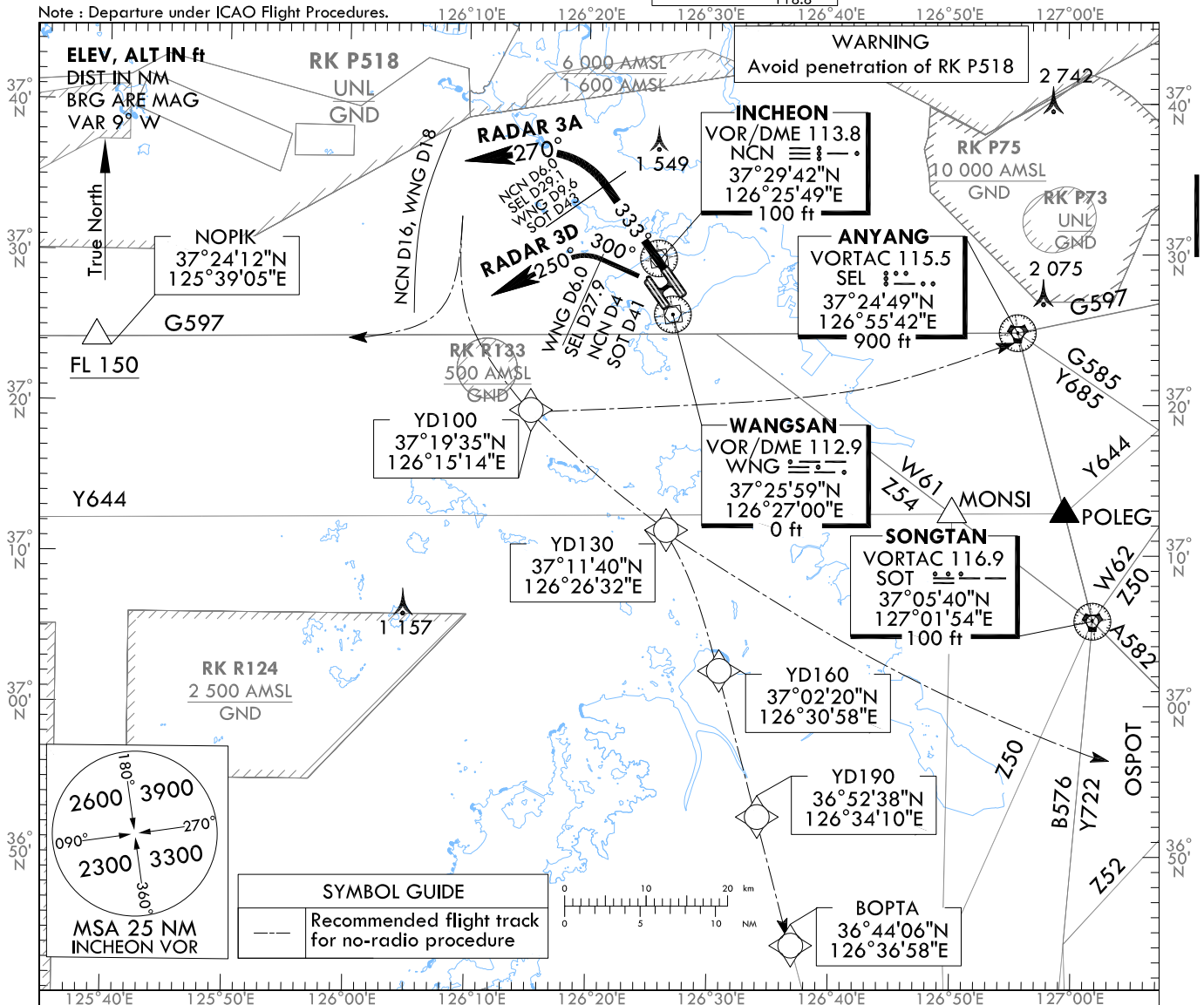
STANDARD DEPARTURE CHART
INSTRUMENT (SID) - ICAO

TRANSITION ALT 14 000
TRANSITION LVL FL 140

SEOUL DEP 125.15
121.4
124.8
INCHEON TWR 118.2
118.8

SEOUL/Incheon Intl(RKSI)
RWY 33L/R RADAR 3A
RWY 34L/R RADAR 3D

Note : Departure under ICAO Flight Procedures.



GENERAL INFORMATION

- 6.0% CG required until FL 150 for ATC and airspace purpose.
- Pilot shall use caution not to penetrate prohibited or restricted areas around airport.
- Aircraft may experience delay due to airspace use coordination, traffic volume, and so on.

RADAR THREE ALPHA DEPARTURE

TAKE OFF RWY 33L/R : Climb on RWY HDG until NCN D6.0(SEL D29.1 or WNG D9.6 or SOT D43),
turn left HDG 270° expect radar vector to airway.

No radio procedure : If no radio contact with ATC, squawk 7600, and unless otherwise instructed by ATC proceed as follows.

- fly south to join R 269 SEL to SEL or proceed direct to YD100 then SEL for G597
- fly south to join G597 to NOPIK
- fly south to YD100, YD130 and OSPOT for A582
- fly south to YD100, YD130, YD160, YD190 and BOPTA for BEDES via Z51.

Pilot shall remain within NCN D16 (SEL D40 or 17 NM from Airport as appropriate) during on HDG 270°.

RADAR THREE DELTA DEPARTURE

TAKE OFF RWY 34L/R : Climb HDG 300° until WNG D6.0(SEL D27.9 or NCN D4 or SOT D41),
turn left HDG 250° expect radar vector to airway. Maintain 3 000 ft until instructed by ATC.

No radio procedure : If no radio contact with ATC, squawk 7600, and unless otherwise instructed by ATC proceed as follows.

- fly south to join R 269 SEL to SEL or proceed direct to YD100 then SEL for G597
- fly south to join G597 to NOPIK
- fly south to YD100, YD130 and OSPOT for A582
- fly south to YD100, YD130, YD160, YD190 and BOPTA for BEDES via Z51.

Pilot shall remain within NCN D16 (SEL D40 or 17 NM from Airport as appropriate) during on HDG 250°.

Change : Information of RK P73.

INTENTIONALLY

LEFT

BLANK